



Demographic and Income Profile

Prepared by Flake & Kelley Commercial

Harrison Metro

Study Area: Custom Shapes

Summary	2000	2008	2013
Population	15,392	16,118	16,798
Households	6,600	7,035	7,387
Families	4,276	4,358	4,499
Average Household Size	2.26	2.22	2.21
Owner Occupied HUs	4,144	4,532	4,658
Renter Occupied HUs	2,456	2,503	2,730
Median Age	39.1	40.5	41.6

Trends: 2008-2013 Annual Rate	Area	State	National
Population	0.83%	1.11%	1.23%
Households	0.98%	1.2%	1.26%
Families	0.64%	0.94%	1.05%
Owner HHs	0.55%	1.01%	1.07%
Median Household Income	3.57%	3.56%	3.19%

Households by Income	2000		2008		2013	
	Number	Percent	Number	Percent	Number	Percent
< \$15,000	1,780	26.9%	1,370	19.5%	1,245	16.9%
\$15,000 - \$24,999	1,124	17.0%	954	13.6%	794	10.8%
\$25,000 - \$34,999	1,098	16.6%	928	13.2%	848	11.5%
\$35,000 - \$49,999	1,141	17.3%	1,282	18.2%	1,136	15.4%
\$50,000 - \$74,999	899	13.6%	1,331	18.9%	1,635	22.1%
\$75,000 - \$99,999	254	3.8%	603	8.6%	803	10.9%
\$100,000 - \$149,999	159	2.4%	304	4.3%	554	7.5%
\$150,000 - \$199,000	49	0.7%	97	1.4%	138	1.9%
\$200,000+	109	1.6%	167	2.4%	233	3.2%
Median Household Income	\$28,067		\$37,889		\$45,159	
Average Household Income	\$39,852		\$52,815		\$64,234	
Per Capita Income	\$17,197		\$23,201		\$28,388	

Population by Age	2000		2008		2013	
	Number	Percent	Number	Percent	Number	Percent
0 - 4	1,006	6.5%	1,072	6.7%	1,113	6.6%
5 - 9	955	6.2%	917	5.7%	933	5.6%
10 - 14	929	6.0%	930	5.8%	938	5.6%
15 - 19	1,082	7.0%	1,017	6.3%	1,024	6.1%
20 - 24	1,006	6.5%	1,081	6.7%	1,126	6.7%
25 - 34	1,889	12.3%	1,980	12.3%	2,008	12.0%
35 - 44	2,058	13.4%	1,973	12.2%	1,932	11.5%
45 - 54	1,921	12.5%	2,152	13.4%	2,237	13.3%
55 - 64	1,520	9.9%	1,879	11.7%	2,145	12.8%
65 - 74	1,429	9.3%	1,349	8.4%	1,490	8.9%
75 - 84	1,082	7.0%	1,123	7.0%	1,121	6.7%
85+	516	3.4%	646	4.0%	731	4.4%

Race and Ethnicity	2000		2008		2013	
	Number	Percent	Number	Percent	Number	Percent
White Alone	14,992	97.4%	15,589	96.7%	16,161	96.2%
Black Alone	22	0.1%	27	0.2%	30	0.2%
American Indian Alone	112	0.7%	131	0.8%	145	0.9%
Asian Alone	66	0.4%	101	0.6%	131	0.8%
Pacific Islander Alone	3	0.0%	4	0.0%	4	0.0%
Some Other Race Alone	82	0.5%	129	0.8%	172	1.0%
Two or More Races	114	0.7%	137	0.8%	155	0.9%
Hispanic Origin (Any Race)	205	1.3%	320	2.0%	421	2.5%

Data Note: Income is expressed in current dollars.

Source: U.S. Bureau of the Census, 2000 Census of Population and Housing. ESRI forecasts for 2008 and 2013.



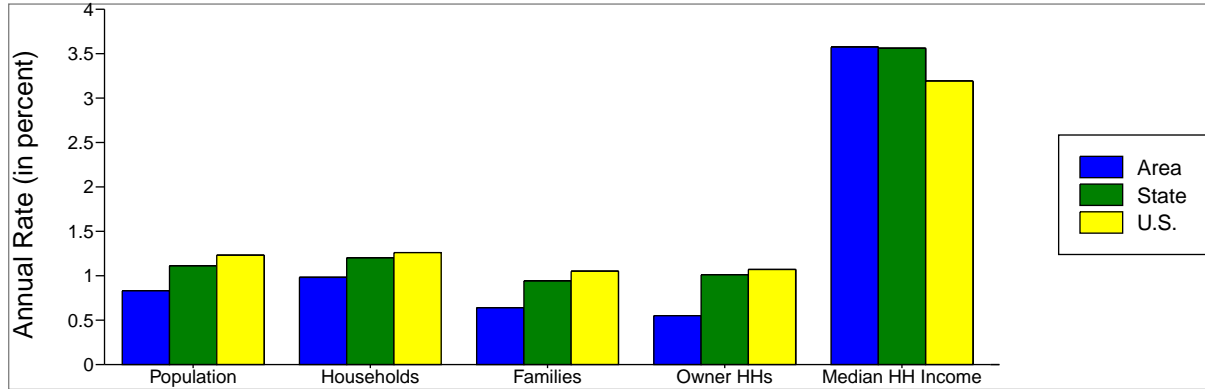
Demographic and Income Profile

Prepared by Flake & Kelley Commercial

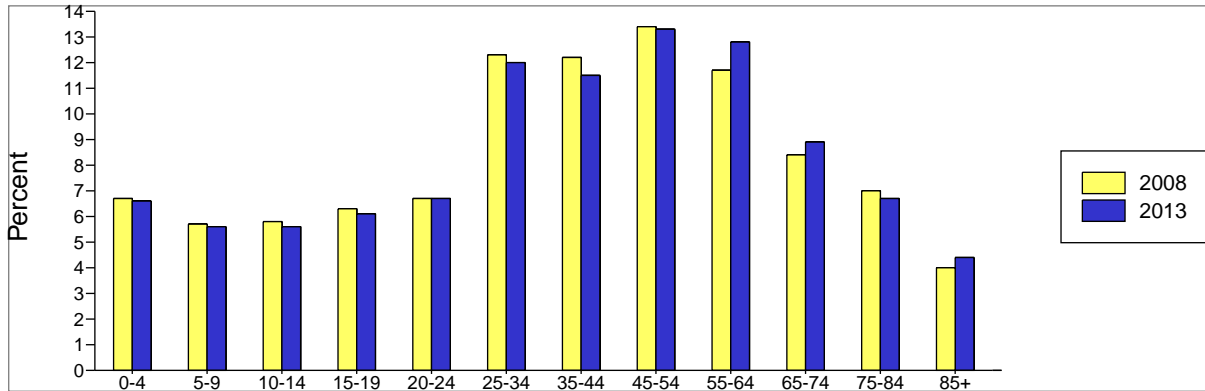
Harrison Metro

Study Area: Custom Shapes

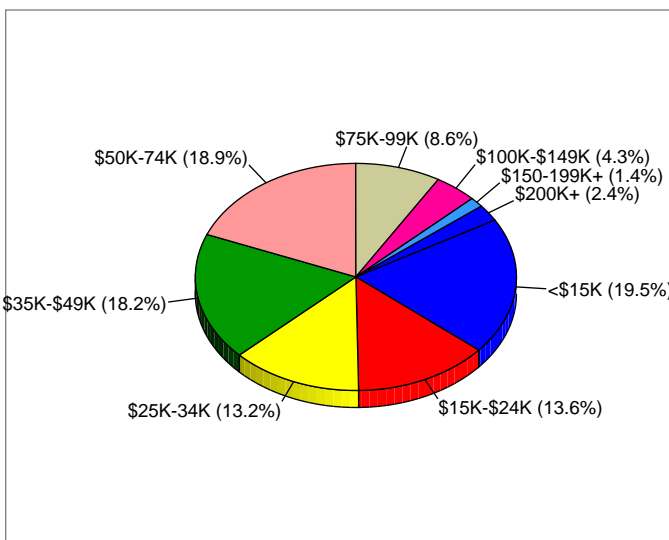
Trends 2008-2013



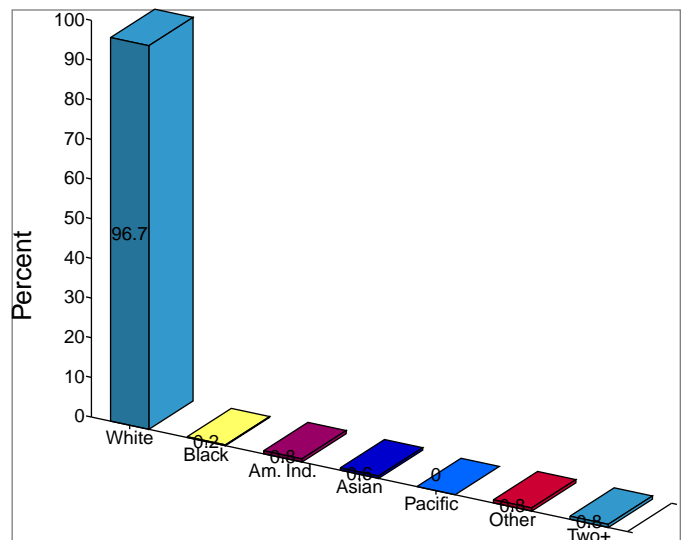
Population by Age



2008 Household Income



2008 Population by Race



2008 Percent Hispanic Origin: 2.0%